



## Industrial Hemp Farms

Denver, CO 80216  
 jack@industrialhempfarms.com  
 (913) 991-8022

## Sample 280-070721-150

Fortified Master Kush  
 Batch/Lot # 0722IHF06

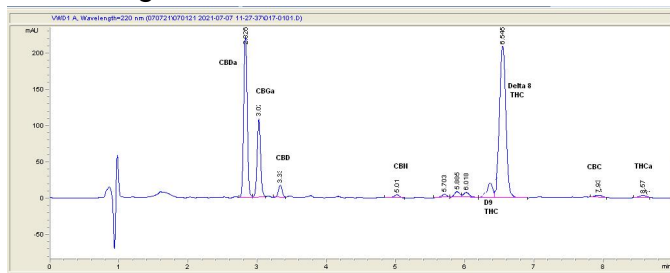
Sample Submitted: 07-07-2021; Report Date: 07-07-2021

## Fortified Master Kush

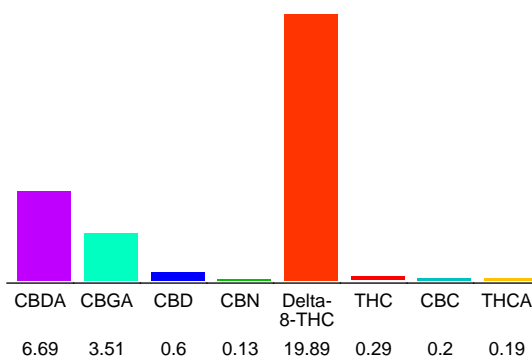
Plant Material: Flower

Batch/Lot # 0722IHF06

### Chromatogram



### Cannabinoid Profile



### Cannabinoid Profile by HPLC

**0.46%**  
 Calculated THC Yield

**6.47%**  
 Calculated CBD Yield

**31.50%**  
 Total Cannabinoids

Cannabinoid	% wt	mg/g
CBDA	6.69	66.9
CBGA	3.51	35.1
CBD	0.6	6.0
CBN	0.13	1.3
Delta-8-THC	19.89	198.9
THC	0.29	2.9
CBC	0.2	2.0
THCA	0.19	1.9
<b>Total Cannabinoids</b>	<b>31.50</b>	<b>315.0</b>
<b>Calculated THC Yield</b>	<b>0.46</b>	<b>4.57</b>
<b>Calculated CBD Yield</b>	<b>6.47</b>	<b>64.67</b>

Calculated Maximum THC Yield = THC + 0.877 \* THCA  
 Calculated Maximum CBD Yield = CBD + 0.877 \* CBDA

### Marin Analytics, LLC

250 Bel Marin Keys Blvd, Suite D4  
 Novato, CA 94949

415-936-6477 / sarabiancalana1@gmail.com

**Sara Biancalana**  
 Chief Scientist

This sample has been tested by Marin Analytics, LLC using valid testing methodologies and a quality system. Values reported relate only to the sample tested. Marin Analytics, LLC makes no claims as to the efficacy, safety or other risks associated with any detected or non-detected levels of any compounds reported herein. This Certificate shall not be reproduced except in full, without the written approval of Marin Analytics, LLC.