



## Eagle Moon Hemp

jared@eaglemoonhemp.com  
575-545-7775

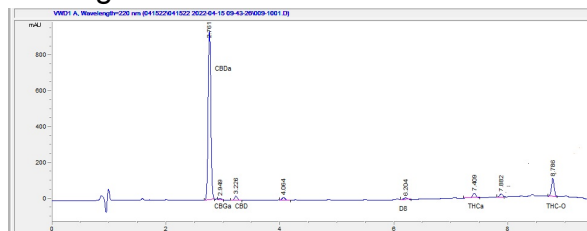
## Sample 251-041522-066

THC-O Sour Tsunami  
Sample Submitted: 04-15-2022; Report Date: 04-16-2022

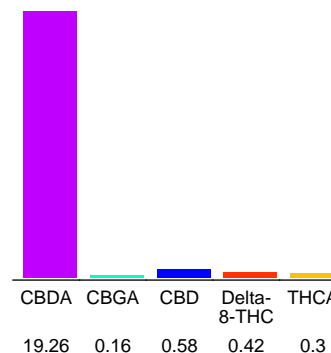
## THC-O Sour Tsunami

Plant Material: Flower

### Chromatogram



### Cannabinoid Profile



### Cannabinoid Profile by HPLC

**0.26%**  
Calculated THC Yield

**17.47%**  
Calculated CBD Yield

**20.72%**  
Total Cannabinoids

Cannabinoid	% wt	mg/g
CBDA	19.26	192.6
CBGA	0.16	1.6
CBD	0.58	5.8
Delta-8-THC	0.42	4.2
THCA	0.3	3.0
<b>Total Cannabinoids</b>	<b>20.72</b>	<b>207.2</b>
<b>Calculated THC Yield</b>	<b>0.26</b>	<b>2.63</b>
<b>Calculated CBD Yield</b>	<b>17.47</b>	<b>174.71</b>

Calculated Maximum THC Yield = THC + 0.877 \* THCA

Calculated Maximum CBD Yield = CBD + 0.877 \* CBDA

**Notes:** THC-O 8.65% based on chromatogram; no reference standard is available.

### Marin Analytics, LLC

250 Bel Marin Keys Blvd, Suite D4  
Novato, CA 94949

415-936-6477 / sarabiancalana1@gmail.com

**Sara Biancalana**  
Chief Scientist

This sample has been tested by Marin Analytics, LLC using valid testing methodologies and a quality system. Values reported relate only to the sample tested. Marin Analytics, LLC makes no claims as to the efficacy, safety or other risks associated with any detected or non-detected levels of any compounds reported herein. This Certificate shall not be reproduced except in full, without the written approval of Marin Analytics, LLC.